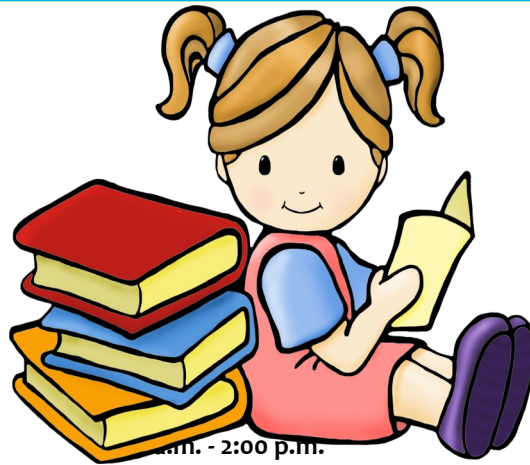


# MONTEBELLO PLAYSCHOOL

3-5 years old

...A fun place to learn and grow through education and recreation.

**\*Program begins Tuesday, September 6, 2016**



9:00 a.m. - 2:00 p.m.  
Cathy Hensel Youth Center  
236 George Hensel Drive, Mtb 90640

**\*Walk-In Registration: Wednesday, August 17, 2016 from 8:30 a.m. - 5:30 p.m.**  
Inside the Recreation and Community Services office.

**SESSION FEES: \$260.00 4-week session Monday-Friday**  
**MATERIAL FEES: \$65.00 (Paid on first session/ per school year/ per child)**

Parent Meeting  
September 1st at 6:00 P.M.

**(323) 887 - 1200 ext. 540**



- \$20.00 sibling discount for additional sibling, per session.
- Payments are due the Thursday prior to the beginning of each session.  
All payments are due at the Recreation and Community Services office.
- Payments not paid by the scheduled dates will then be due the following Monday.  
Delinquent payments may result in losing your spot, as we will provide opening for individuals on the waiting list.
- Payments paid after 12:00 p.m. the Monday after the due date will be charged a \$2.00 late fee per day, per child.
- For your convenience, the office accepts cash/checks/money orders and credit cards.
- Children picked up after 2:00 p.m. will be charged a \$2.00 per minute late fee beginning at 2:05 p.m.
- **COPIES** of the child's immunization Card and Birth Certificate must be attached to the registration packet.

IN COMPLIANCE WITH THE AMERICAN WITH DISABILITY ACT, IF YOU NEED SPECIAL ASSISTANCE TO PARTICIPATE IN OUR ACTIVITY, PLEASE CONTACT THE MONTEBELLO DEPARTMENT OF PARKS & RECREATION, (323) 887-1200 EXT. 540. NOTIFICATION 48 HOURS PRIOR TO THE MEETING WILL